

Getting to the Heart of the Problem: Targeting, Assessing and Solving Problem Behaviors



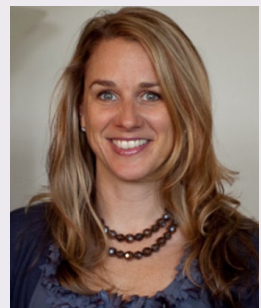
Behavioral Tech

This training is intended for mental health professionals who have knowledge of, experience, and/or prior training in DBT, and want to advance their skills in targeting behaviors and conducting chain and solution analyses with clients with multiple problems.

Learning Objectives:

1. Prioritize target behaviors for individual Stage 1 DBT sessions when clients present with multiple problems.
2. Define problem behaviors specifically and behaviorally.
3. Identify the critical variables influencing a problem behavior by use of chain analyses.
4. Define and test hypotheses about problem behaviors.
5. Explain the difference between chain and solution analyses.
6. Conduct solution analyses.
7. Troubleshoot common problems in implementing chain analysis procedures.

Location:	Raleigh, NC
Dates:	December 6-7, 2018
Price:	\$385 per person
Trainer:	Lorie Ritschel, PhD



CE Hours:	12.5 hours for most disciplines (see reverse for CE statements)
Primary Objective:	Assess problems and develop effective solutions.

Continuing Education Credit Information

Only participants with 100 % attendance will receive credit. Behavioral Tech cannot offer partial credit. Please remember to sign in and sign out each day to document your attendance. Continuing Education documentation will be emailed to you 4 – 6 weeks after the training. This offering meets the requirements for the following hours by discipline. Licensing and continuing education requirements vary by state. Please contact your state’s regulatory authority to verify if this course meets your licensing or continuing education requirements. Questions about CE can be directed to Behavioral Tech via phone at 206-675-8589 or via email to ceinfo@behavioraltech.org. **CE NOTE:** Behavioral Tech calculates the continuing education credits for this training by the start time and end time. 100 percent attendance is required, as is signing IN and OUT each morning and afternoon, to receive CE credits. Partial credits cannot be issued.

Alcohol and Drug Abuse Counselors

Behavioral Tech is approved by the NAADAC – the Association for Addiction Professionals, Provider #77431. Behavioral Tech will email you a letter documenting your attendance upon successful completion of the activity. The allotted contact hours for this activity = 12.5.

Mental Health Counselors

Behavioral Tech is approved by a NBCC-Approved Continuing Education Provider (ACEP™) and may offer NBCC-approved clock hours for events that meet NBCC requirements. The ACEP solely is responsible for all aspects of the program. Behavioral Tech will email you a letter documenting your attendance upon successful completion of the activity. The allocated clock hours for this activity = 12.5.

Nurses

Behavioral Tech is accredited by the Accreditation Council for Continuing Medical Education to provide continuing medical education for physicians. Nurses should only claim credit commensurate with the extent of their participation in the activity. Continuing Medical Education is accepted by the ANCC for nursing certification renewal. The maximum AMA PRA Category 1 Credits™ designated by Behavioral Tech for this activity = 12.5. *At the end of the training, each Nurse must complete and sign the provided form to record the number of credits claimed. Keep one copy & return the other copy to Behavioral Tech.*

Psychiatrists

Behavioral Tech is accredited by the Accreditation Council for Continuing Medical Education to provide continuing medical education for physicians. Physicians should only claim credit commensurate with the extent of their participation in the activity. The maximum AMA PRA Category 1 Credits™ designated by Behavioral Tech for this activity = 12.5. *At the end of the training, each Physician must complete and sign the provided form to record the number of credits claimed. Keep one copy & return the other copy to Behavioral Tech.*

Psychologists

Behavioral Tech is approved by the American Psychological Association to offer continuing education for psychologists. Behavioral Tech maintains responsibility for the program and its content. Behavioral Tech will email you a letter documenting your attendance after successful completion of the program and homework. The number of hours Behavioral Tech has allocated within APA guidelines = 12.5.

Social Workers- WA

Behavioral Tech will apply to the NASW, Washington State Chapter, Provider Number 1975-166, to offer continuing education for Certified Social Workers. Behavioral Tech will email a certificate of attendance upon 100% completion of this activity. The hours of CE allocated for this activity = 12.5.

Social Workers- NC

Behavioral Tech, LLC will apply to the National Association of Social Workers, NC Chapter to receive CE Program Endorsement for this workshop. Behavioral Tech will email a letter documenting attendance to participants with 100% completion of the program. The allocated live contact hours for this activity = 12.5.

